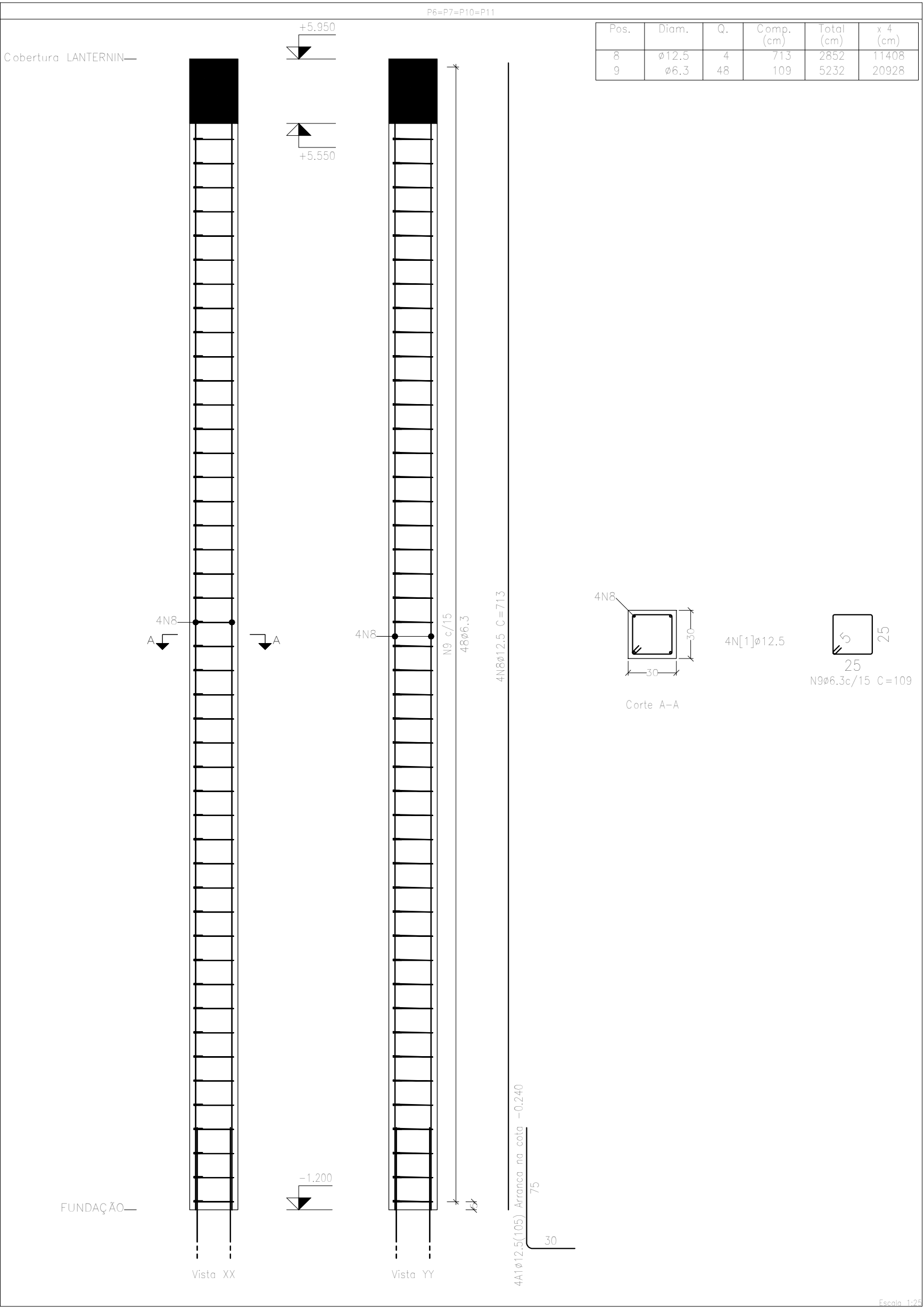
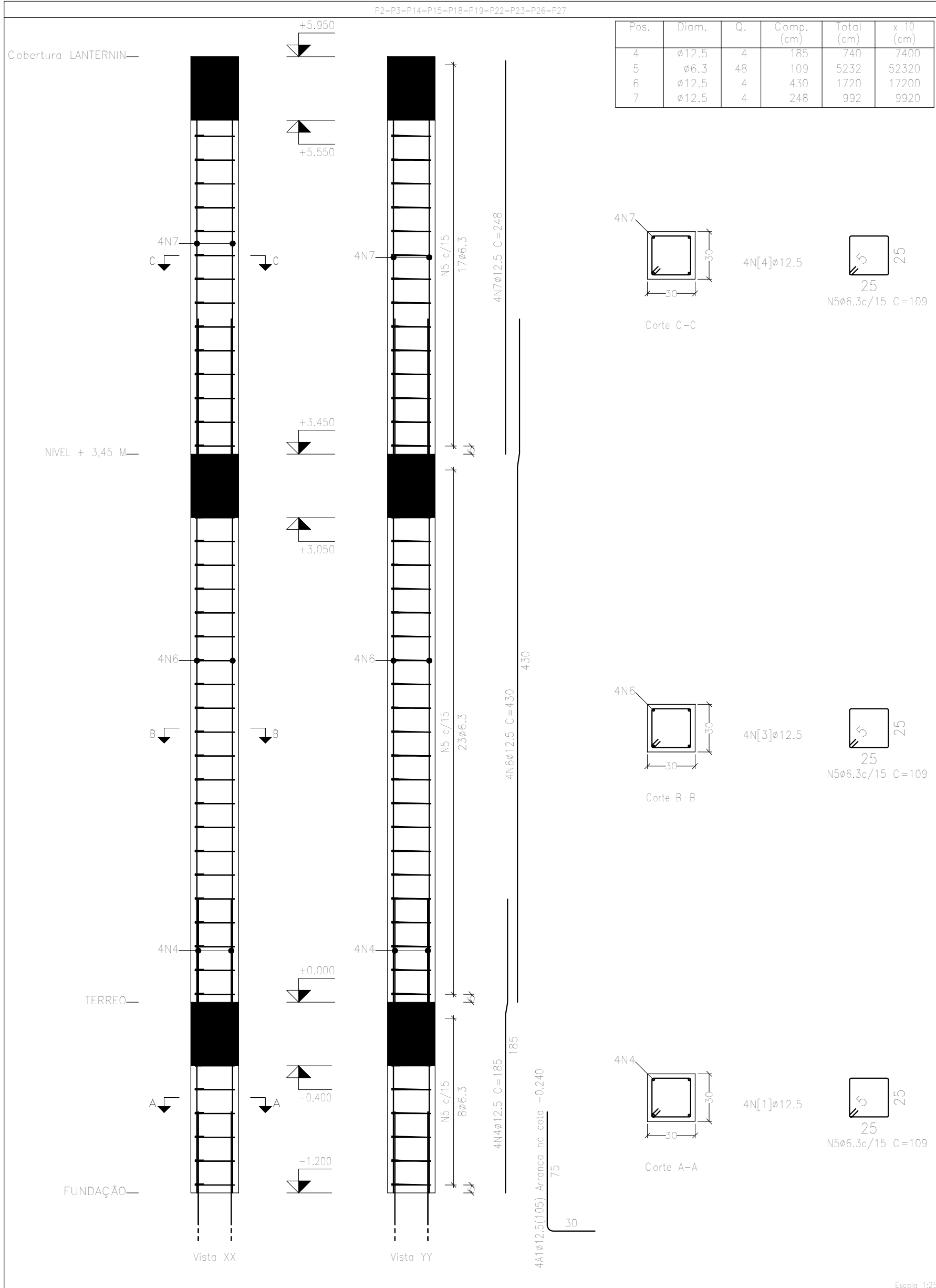


Pilares que nascem em FUNDAÇÃO e chegam em Cobertura LANTERNIN
Concreto: C25, em geral
Aço das barras: CA-50 e CA-60
Aço dos estribos: CA-50 e CA-60

Elemento	Pos.	Diam.	Q.	Esquema (cm)	Comp. (cm)	Total (cm)	CA-50 (kg)	CA-60 (kg)
P1=P4=P5=P8=P9 P12=P13=P16=P17 P20=P21=P24=P25 P28	1	Ø12.5	4		195	780	7.5	
	2	Ø6.3	31		109	3379	8.3	
	3	Ø12.5	4		343	1372	13.2	
	Total+10% (x14)						31.9	446.6
P2=P3=P14=P15=P18 P19=P22=P23=P26 P27	4	Ø12.5	4		185	740	7.3	
	5	Ø6.3	48		109	5232	12.8	
	6	Ø12.5	4		430	1720	16.6	
	7	Ø12.5	4		248	992	9.6	
	Total+10% (x10)						50.7	507.0
P6=P7=P10=P11	8	Ø12.5	4		713	2852	27.5	
	9	Ø6.3	48		109	5232	12.8	
Total+10% (x4)						44.3	177.2	
						Ø6.3:	324.4	0.0
						Ø12.5:	806.4	0.0
						Total:	130.8	0.0



Resumo Aço Pilares	Comp. total (m)	Peso+10% (kg)	Total
CA-50 Ø6.3	1205.5	325	
Ø12.5	760.6	806	1131